

AB PROFIT HOGA
AUR BHI ZYAADA

TATA
PRIMA
2830.K HRT

TATA TRUCKS
DESH KE TRUCKS

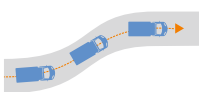
Technical Specifications

MODEL	PRIMA 2830.K HRT
GROSS VEHICLE WEIGHT	28 000 kg
ENGINE	Cummins 6.7 l OBD-II
ENGINE CAPACITY	6 702 cc
MAXIMUM POWER	224 kW @ 2 300 r/min
MAXIMUM TORQUE	1 200 Nm @ 1 200 - 1 500 r/min
CLUTCH	430 mm
FRAME	Heavy duty straight frame with riveted / Bolted cross members
TRANSMISSION	TATA G1350
FRONT AXLE	Heavy duty forged I beam Reverse Elliot type
REAR AXLE	Hub Reduction Transmission
REAR SUSPENSION	Bogie
BODY SIZE (CuM)	16 Box & Scoop 20 Box & Scoop
CONFIGURATION	6 x 4
CAB/COWL	PRIMA Day Cab
TYRES	11 x 20 MT, 12 x 24 MT
VENTILATION	AC
FUEL TANK CAPACITY	300 l HDPE
WHEELBASE OPTIONS	3 900 mm & 4 500 mm
NO OF TYRES	10 Tyres

Key Features & Benefits



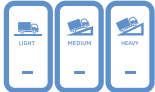
Gear Shift Advisor



Automatic Traction Control (ATC)



Hill Start Assist



Multimode FE Switch



Engine Brake



Fleetedge Telematics



Fuel Monitoring System



Firmware Over The Air

Applications

Irrigation Projects



Airport Infrastructure



Limestone Mining



Mining



TATA MOTORS

To know more, visit your nearest Tata Motors dealership

www.trucks.tatamotors.com

18 00 20 97 979 Follow us on

